












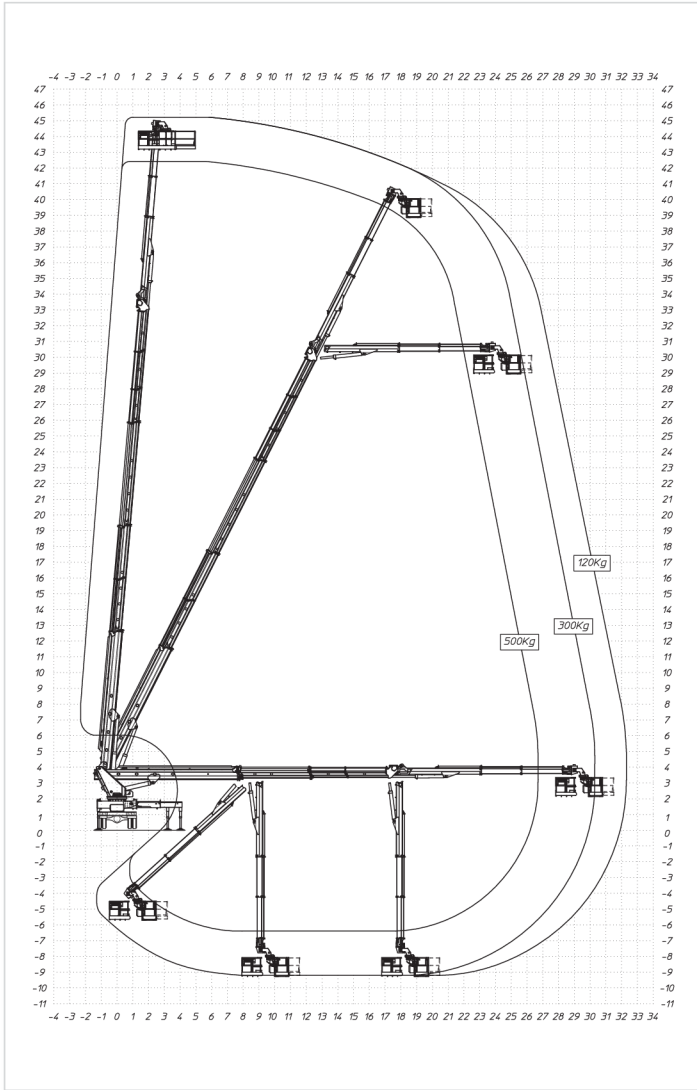
MJ450

	45,00 m		43,00 m		26 TON 32,30 m (120 kg) 30,30 m (300 kg) 26,70 m (500 kg)	32 TON 33,80 m (120 kg) 31,80 m (300 kg) 28,20 m (500 kg)
	500/300/120 kg		2,50/3,80x0,90x1,10 m		90°+90°	
	360° NON-STOP		EX Stabilizzatori a estensione laterale idraulica Stabs par vérins extensibles hydrauliquement Laterally extensible hydraulic stabilizers H-Abstützung		26/32 t	

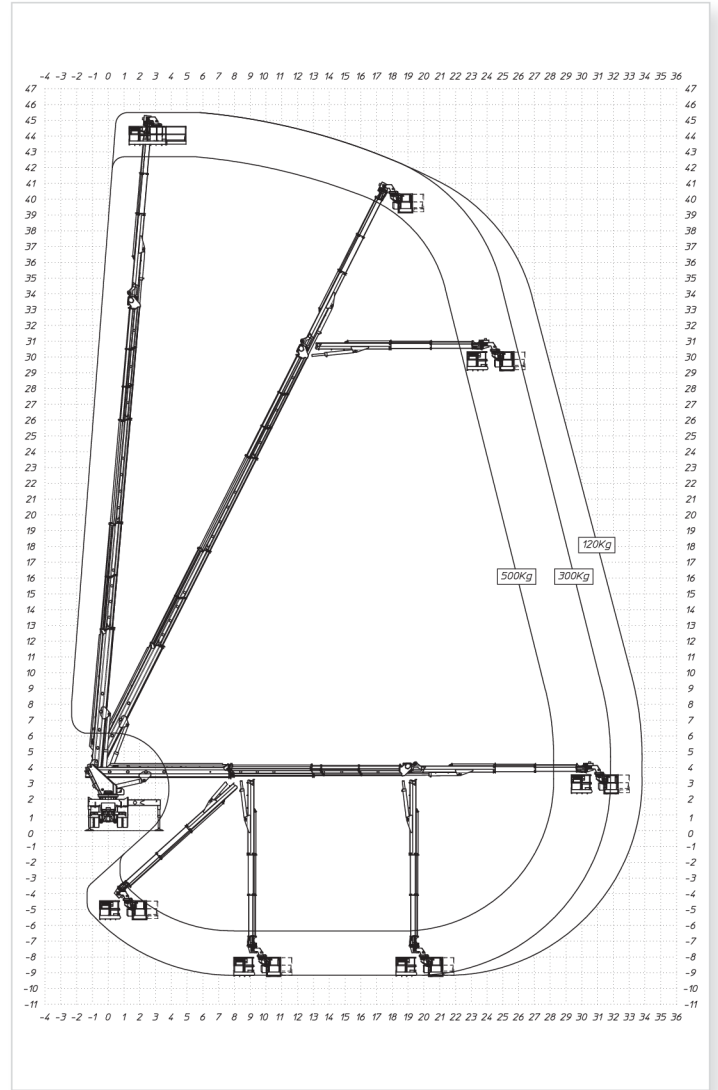
FILIALE MISSAGLIA: Via I° Maggio, 25 - 23873 Missaglia (LC) - Tel: +39 039 92.011.61- Tel: +39 039 92.011.62

FILIALE SESTO SAN GIOVANNI: Via G. di Vittorio, 338 - 20099 Sesto San Giovanni (MI) - Tel: +39 02 26224081

INFO LINE: 800.900.061



P.T.T. 26 TON



P.T.T. 32 TON

