

T-CRANE

CRAWLER TELESCOPIC BOOM CRANE



1060




Tecman

T-CRANE 1060

CRANE

SELF-PROPELLED
SELF-LEVELLING

The **first pick&carry mini crane with self-levelling technology.** La prima mini gru pick&carry con tecnologia autolivellante.

Highly flexible, T-Crane 1060 can be used in variety of lifting situations from internal to outdoor lifting, **on slopes and uneven terrain up to 22°.** Altamente flessibile, la T-Crane 1060 può essere utilizzata in diverse situazioni di sollevamento, da quelle interne a quelle esterne, su pendenze e terreni irregolari fino a 22° di inclinazione.

Equipped with our innovative levelling technology, the T-Crane 1060 easily travels and carries **loads up to 990kg, featuring a 7.7m lifting height with a 6.1m maximum working radius.** Dotata della nostra innovativa tecnologia di livellamento, la T-Crane 1060 trasporta facilmente carichi fino a 990 kg, con un'altezza di sollevamento di 7,7 metri e un raggio di lavoro massimo di 6,1 metri.

MODE

WORKING
DIAGRAMS

AUTO

STATIC



Maximum lifting performance

Massime performance di sollevamento

DRIVING



Automatic self-propelled function based on load and outreach

Abilitazione automatica alla traslazione in base al carico



Only working diagram of 990 kg (with counterweight)

Solo diagramma di lavoro di 990 kg (con zavorra)



Radio console by AUTECH
Console radio by AUTECH

7,7m
moving
height
altezza traslazione

**DYNAMIC
LEVELLING**

15° LONGITUDINAL
15° LATERAL



Technical data

| | |
|--|-----------------|
| Max lifting height | 7,7 m |
| Max moving height | 7,7 m |
| Rotation angle | +/-110° |
| Max working radius | 6,11 m x 450 kg |
| Max. crane capacity | 990 kg x 3,5m |
| Pick and carry capacity | 990 kg |
| Length in stowed position with counterweight | 4,32 m |
| Length in stowed position without counterweight | 4,22 m |
| Min width in stowed position | 1,35 m |
| Max working width | 2,45 m |
| Min height in stowed position | 1,91 m |
| Longitudinal leveling | +/- 15° |
| Lateral leveling | +/- 15° |
| Max gradeability | 25° |
| Max side gradeability | 25° |
| Drive speed (fast) | 2,5 km/h |
| Security speed | 0,3 km/h |
| Length of winch cable | 30 m |

T-CRANE 1060

| |
|-----------------|
| 7,7 m |
| 7,7 m |
| +/-110° |
| 6,11 m x 450 kg |
| 990 kg x 3,5m |
| 990 kg |
| 4,32 m |
| 4,22 m |
| 1,35 m |
| 2,45 m |
| 1,91 m |
| +/- 15° |
| +/- 15° |
| 25° |
| 25° |
| 2,5 km/h |
| 0,3 km/h |
| 30 m |

Dati tecnici

| |
|---|
| Altezza massima di sollevamento |
| Altezza massima di traslazione |
| Angolo di rotazione torretta |
| Raggio di lavoro massimo |
| Capacità massima della gru |
| Capacità di prelievo e trasporto |
| Lunghezza richiusa con zavorra |
| Lunghezza richiusa senza zavorra |
| Larghezza minima richiusa |
| Larghezza massima di lavoro |
| Altezza minima richiusa |
| Livellamento longitudinale |
| Livellamento laterale |
| Pendenza massima superabile |
| Pendenza laterale massima |
| Velocità traslazione (rapida) |
| Velocità sicurezza |
| Lunghezza cavo verricello |

Extras - On Demand

- **Non-marking tracks**
Cingoli antitraccia
- **Electric pump 220V 2,2kW**
Elettropompa 220V 2,2kW
- **Lubricant kit for arctic climate**
Kit Lubrificante per clima artico

Weights

| | | |
|---|------------|------------|
| Total weight with counterweight | 3850 kg | 3910 kg |
| Traffic load with counterweight | 3,57 kN/m2 | 3,63 kN/m2 |
| Total weight without counterweight | 2850 kg | 2910 kg |
| Traffic load without counterweight | 2,64 kN/m2 | 2,7 kN/m2 |

EVO

LTH

Pesi

| |
|--------------------------------------|
| Peso totale con zavorra |
| Carico al suolo con zavorra |
| Peso totale senza zavorra |
| Carico al suolo senza zavorra |

Power

| | | |
|-----------------|--|--|
| Engine | 3TNM68 Yanmar engine (diesel) 17 Hp | Lithium battery pack 300A-48V DC 4 kW |
| Battery Charger | - | N°2 20A-48V |

Potenza

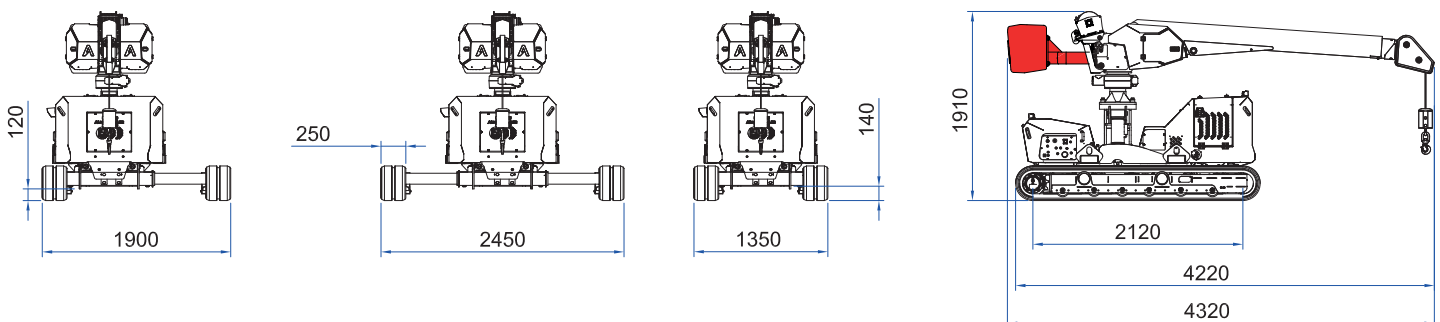
| |
|----------------|
| Motore |
| Caricabatterie |



Simplify and centralize the management of all after-sales activities, spare parts purchasing and warranty procedures.

Semplifica e centralizza la gestione di tutte le attività post vendita, acquisto ricambi e richieste di garanzia.

**MYALMAC
CONTROL
PANEL**



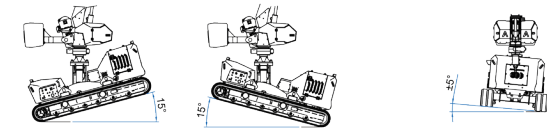
REMOVABLE COUNTERWEIGHT ZAVORRA RIMOVIBILE

Lowers the overall weight to 2.850 kg for easy transportation

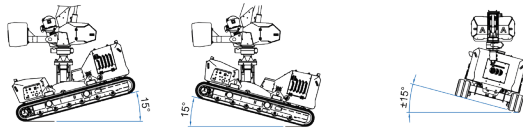
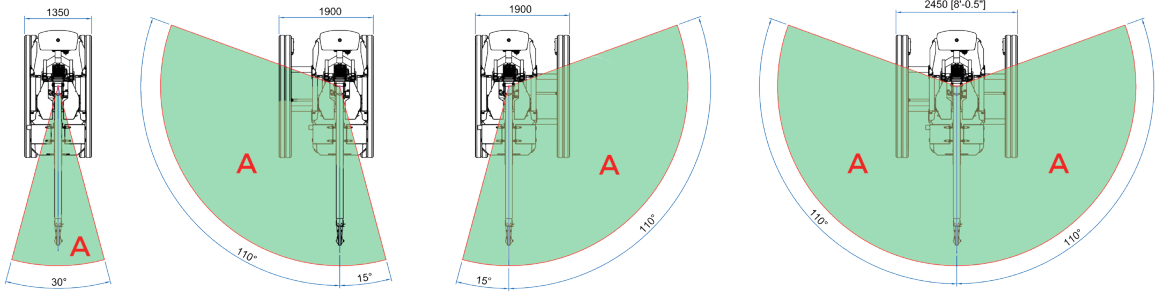
Peso complessivo ridotto a 2.850 kg per un trasporto più agevole



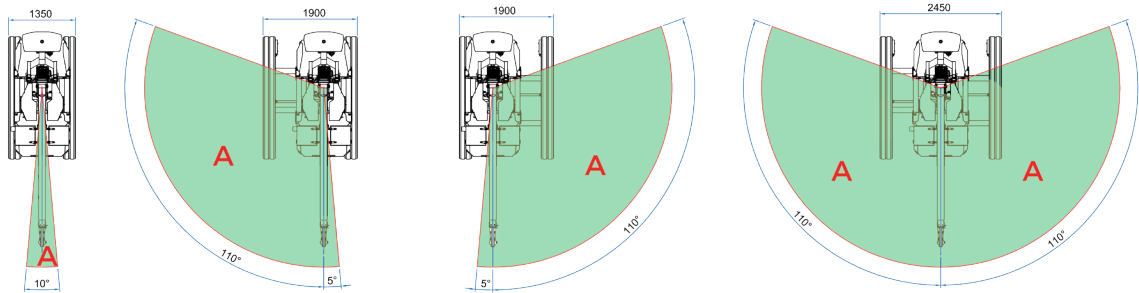
Static working diagrams



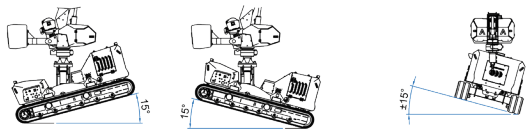
+/- 15° longitudinal inclination
+/- 5° lateral inclination



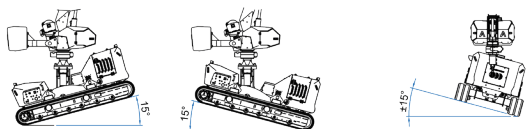
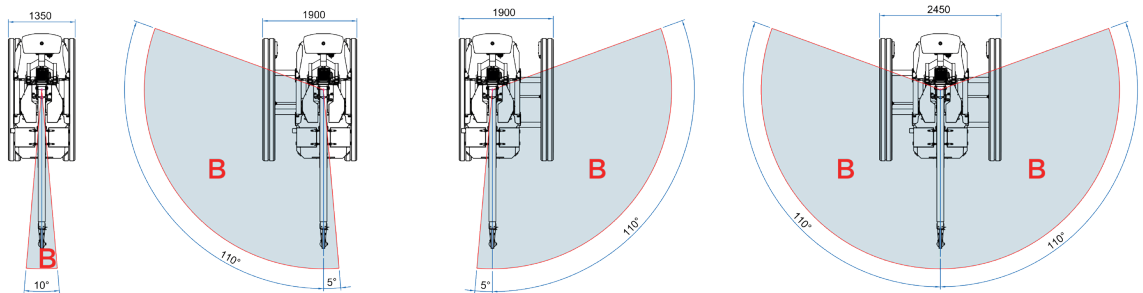
+/- 15° longitudinal inclination
+/- 15° lateral inclination



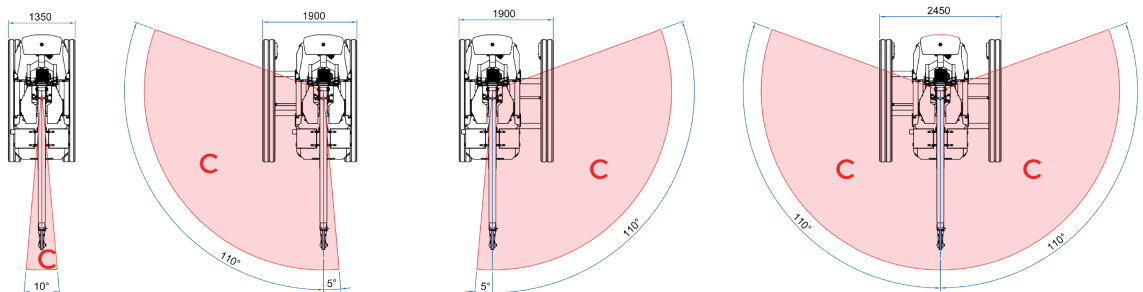
Driving working diagrams



+/- 15° longitudinal inclination
+/- 15° lateral inclination

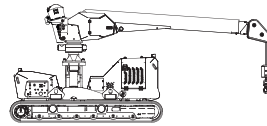


+/- 15° longitudinal inclination
+/- 15° lateral inclination

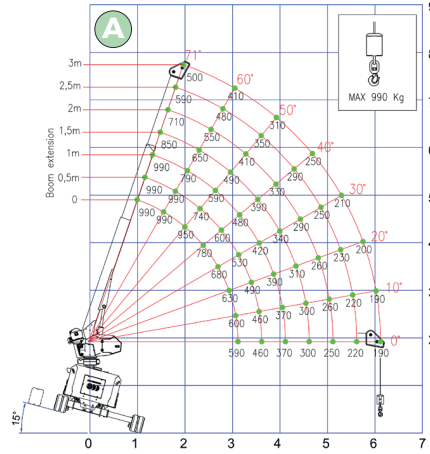
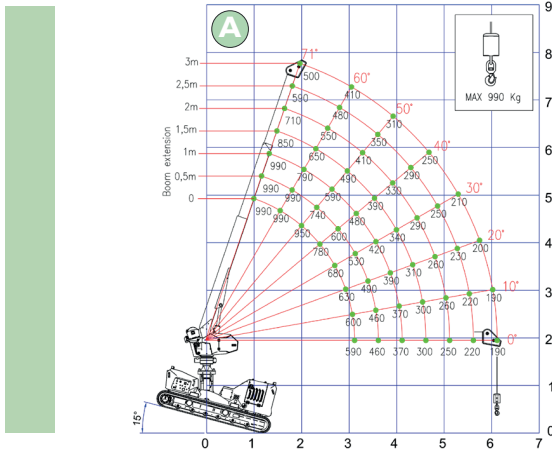


T-CRANE 1060

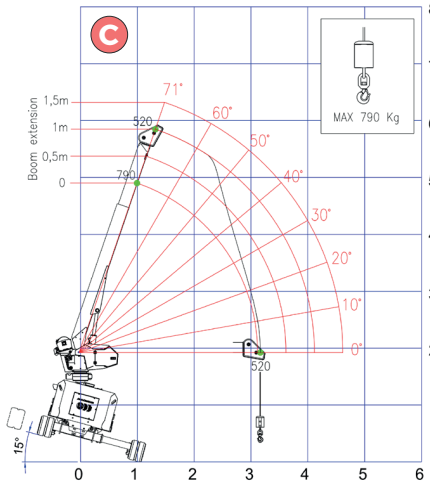
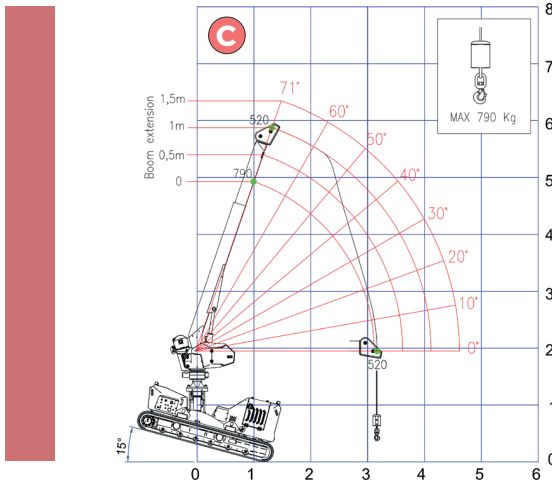
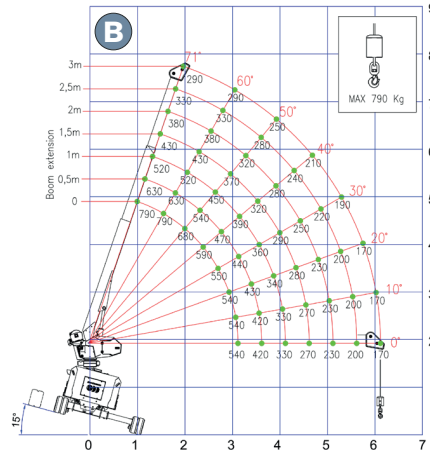
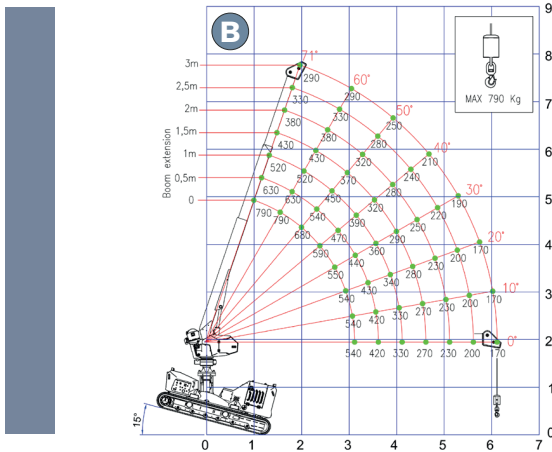
Working diagrams **without** counterweight



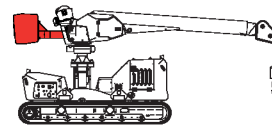
Static working diagrams



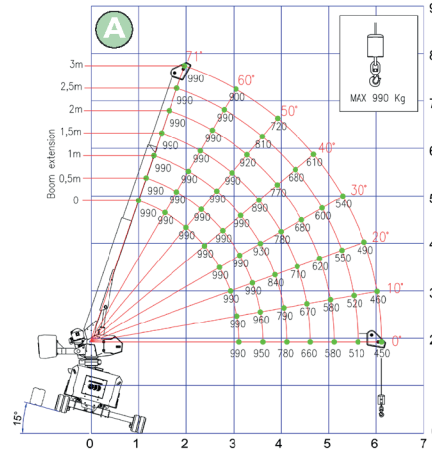
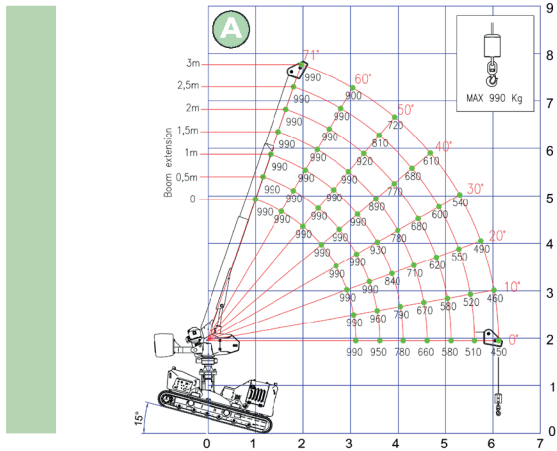
Driving working diagrams



Working diagrams **with** counterweight



Static working diagrams



Driving working diagrams

