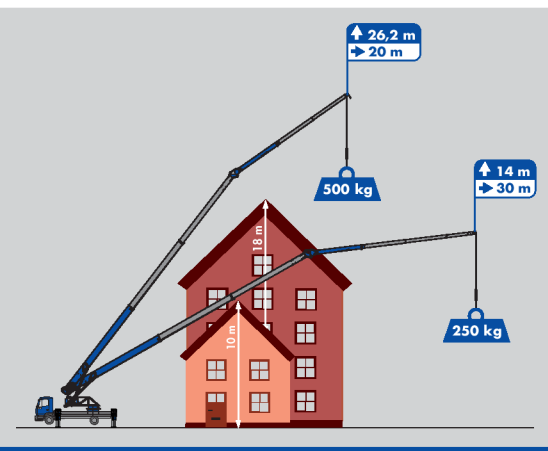


K750 RS



Hook height **36.4 m**/Extension length **37.9 m**
30 m range with **250 kg**
 Extremely long folding jib: **12.94 m**



Equipment



TSR Mast system



H support



Automatic set-up



Dual fly jib joint



Dual luffing cylinders



Telescopic winch



Endless rotatable boom



Crane control system



Radio remote control



Drive concept



Full panelling



Hybrid drive (opt.)



Elevating work platform (opt.)



Accessory fix system (opt.)



Personal security (opt.)



Mounting/glass hook (opt.)

Technical specifications

Hook load (stand./opt.)	2.0/4.0 t
Hook height	36.40 m
Extension length	37.94 m
Support width (min.)	3.15 m
Support width (max.)	5.49 m
Winch pulling force	2,000 kg
Ausleger (2.000kg)	4.76 m
Boom 1 (1.000kg)	7.88 m
Pull-out 2 (500kg)	11.00 m
Pull-out 3 (250kg)	12.94 m
Truck* Total weight (min.)	≥ 7.49 t

*dependent on truck type

Work area

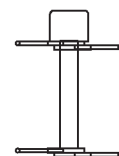
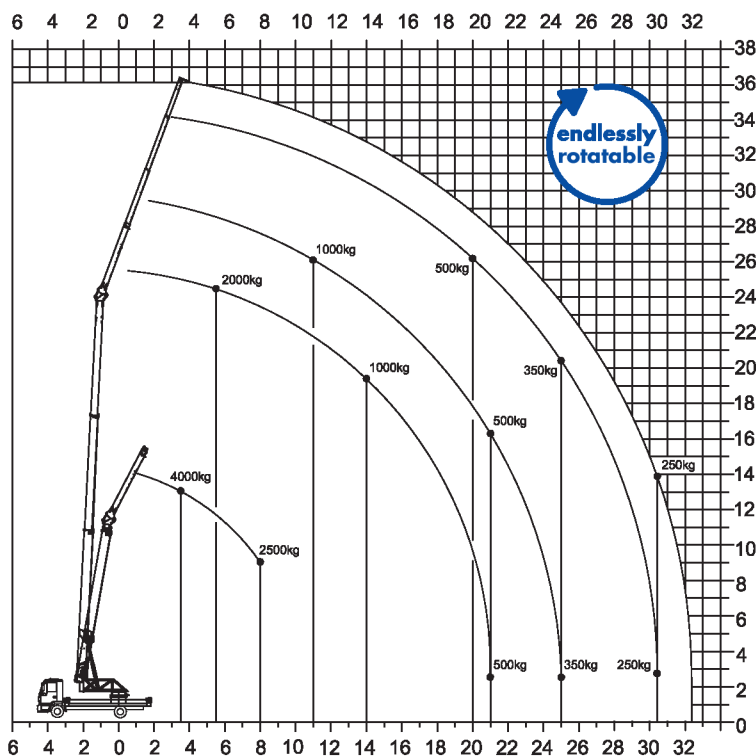
Load	Range	Height
2,000 kg	5.50 m	24.80 m
1,000 kg	14.00 m	19.00 m
500 kg	20.00 m	26.20 m
250 kg	30.00 m	14.00 m

Work area 4t-function*

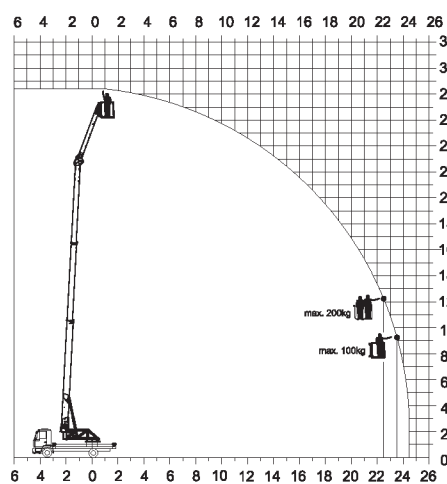
Load	Range	Height
4,000 kg	3.50 m	13.00 m
2,000 kg	8.00 m	9.00 m

*with diverter pulley

Load diagrams



Platform operation (HA 2/200)



Platform operation with 1 pull-out (HA 2/200)

